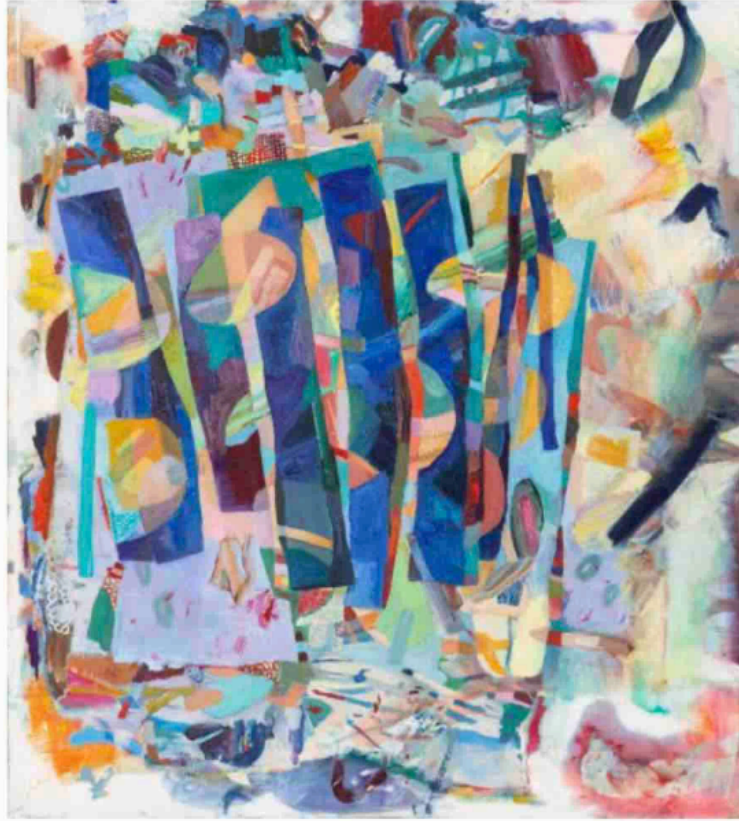


Case's paintings rely on a beguiling density, gained from years of working and reworking a surface.



Slider
oil on panel
18" x 20"



Afternoon Delight
oil on panel
42" x 50"

Spaces are articulated out of a selection of suggestions; a leaf or a palm frond, a bisected jug, a coffee cup stain, or notebook paper page might come and go out of the diversity of painting approaches. Each work implies a stunning resolve to erase and redo, coating areas in so many overlapping drips, scrapes, brush marks, and dabs that are ruthlessly sanded away. Case's layers sometimes recall lace or quilts, and patterns recall travels to Japan, Iran, and India, with references to Andean textiles, miniature painting, and the earnest doodles of teens.



Sunspot
oil on panel
24" x 24"

Case's solo exhibitions include Western Michigan University, Lux Art Institute, Loyola University, McLean Projects for the Arts, and the Art Registry in Washington, DC, and she has shown in numerous group exhibitions across the US. She has been awarded residencies at Lux Art Institute, CA, the Virginia Center for the Creative Arts, the School 33 Art Center in Baltimore, MD, the Vermont Studio Center, and the Kanoria Centre for the Arts in Ahmedabad, IN. She was the recipient of the Bethesda Painting Award and 2018 and 2017 Janet and Walter Sondheim Artscape Prize Semi-finalist. She earned her MFA from MICA's Mount Royal School of Art in Baltimore, MD, and her BFA from California State University in Long Beach, CA.



Book Water
oil on panel
12" x 12"



Gingham Heart
oil on panel
18" x 20"



Morning Drive In
oil on panel
12" x 12"