

# ceramics

M O N T H L Y

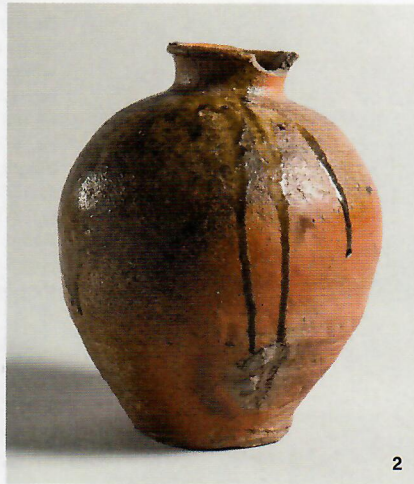
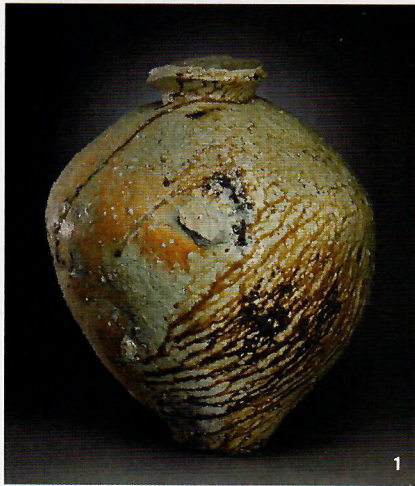


Cover: Mette Maya Gregersen  
Spotlight: Tiles Inspired by Guernica  
Clay Culture: 50 Bowls, 50 Wood Fires  
Tech: Customizing Kiln Firing Schedules



7 25274 97090 2  
Feb 2023 \$8.75 (Can \$11.50)

# exposure



1 Tsujimura Shirō's large natural ash-glazed vessel (shizen-yū ōtsubo), stoneware, natural ash drip glaze, circa 1985. *Photo: Joan B. Mirviss LTD.* 2 Unknown maker's Shigaraki-ware storage jar, stoneware with natural ash glaze, late 16th–early 17th century. *Photo: Jeri Hollister and Patrick Young, Michigan Imaging.* 3 Kohyama Yasuhisa's sculpture, stoneware with ash glaze, circa 2000. *Copyright of the artist.* 4 Unknown maker's storage jar, stoneware with natural ash glaze, Muromachi period, late 14th–15th century. "Clay as Soft Power," at the University of Michigan Museum of Art ([www.umma.umich.edu](http://www.umma.umich.edu)) in Ann Arbor, Michigan, through May 7. 5 Gabriela Vainsencher's *A stage, complete with a sofa, curtains, a large ear, and someone who has yet to make an entrance* (front), 15 in. (38 cm) in height, porcelain, glaze, underglaze, 2022. 6 Gabriela Vainsencher's *A stage, complete with a sofa, curtains, a large ear, and someone who has yet to make an entrance* (back). 7 Gabriela Vainsencher's *A mother determined*, 13 in. (33 cm) in height, porcelain, underglaze, gold ink, 2022. "Gabriela Vainsencher: Mother Figures," at Asya Geisberg Gallery ([www.asyageisberggallery.com](http://www.asyageisberggallery.com)) in New York, New York, February 23–April 1.